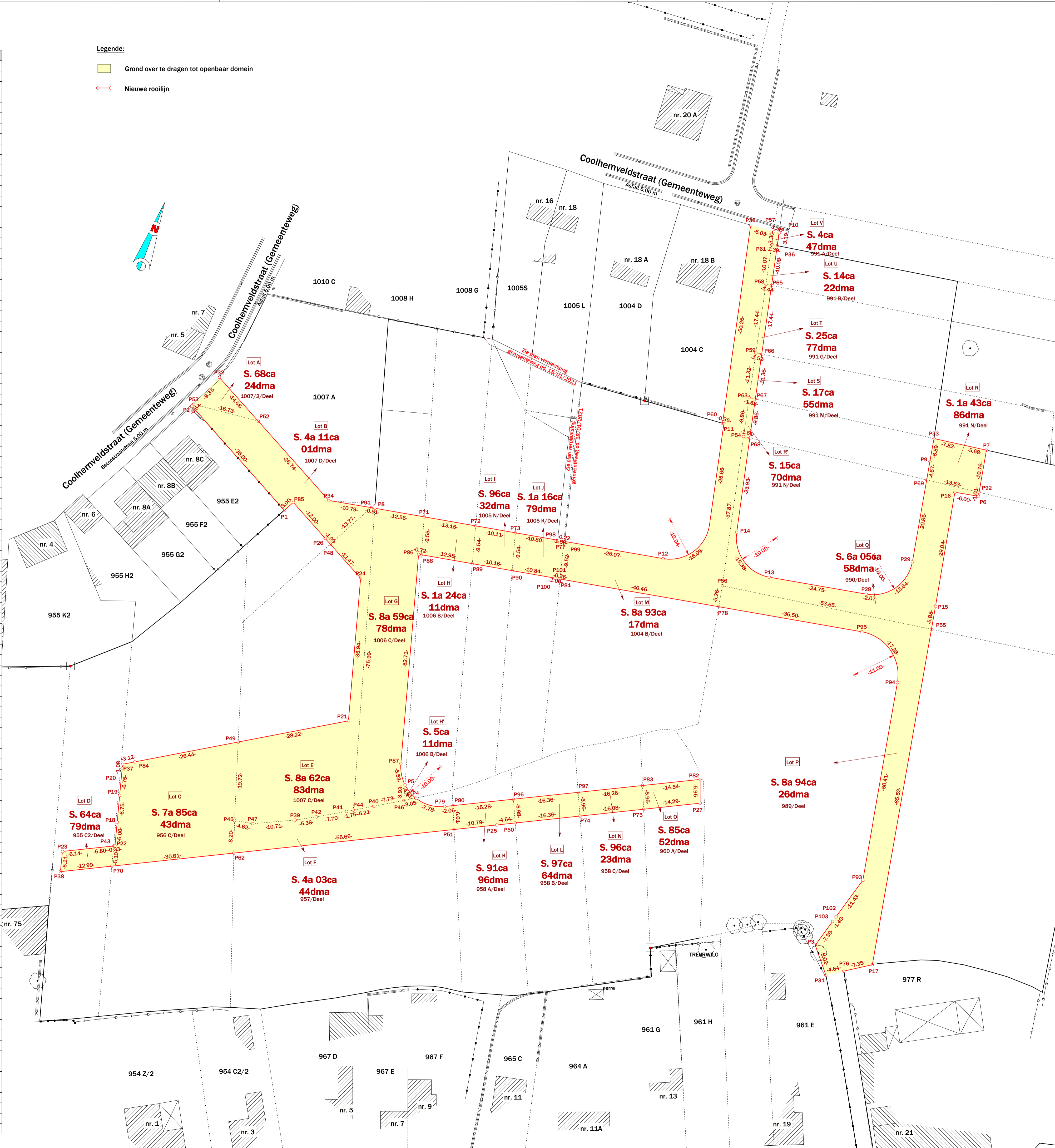


Coördinaten volgens Lambert 72 stelsel

Ptn.	X (m)	Y (m)	Commentaar
P1	145202.24	195623.58	NG
P2	145171.36	195640.06	NG
P3	145365.18	195567.56	NG
P4	145258.28	195567.31	NG
P5	145254.60	195569.48	NG
P6	145364.50	195687.45	NG
P7	145362.38	195699.02	NG
P8	145223.37	195631.98	NG
P9	145350.05	195691.39	NG
P10	145294.59	195732.03	NG
P11	145298.21	195682.34	NG
P12	145295.65	195645.27	NG
P13	145322.29	195650.16	NG
P14	145310.71	195657.87	NG
P15	145363.99	195657.83	NG
P16	145358.60	195686.36	NG
P17	145380.38	195567.92	NG
P18	145190.04	195535.61	NG
P19	145188.30	195542.13	NG
P20	145186.55	195548.66	NG
P21	145235.70	195579.62	NG
P22	145191.59	195529.82	NG
P23	145179.72	195523.92	NG
P24	145226.13	195614.26	NG
P25	145279.72	195568.06	NG
P26	145214.25	195620.59	NG
P27	145325.72	195590.93	NG
P28	145346.63	195654.64	NG
P29	145354.66	195666.28	NG
P30	145287.20	195731.43	NG
P31	145370.32	195561.40	NG
P32	145175.30	195649.22	NG
P33	145349.00	195697.18	NG
P34	145211.88	195629.78	NG
P35	145295.65	195645.27	NG
P36	145295.26	195728.91	NG
P37	145186.27	195549.70	NG
P38	145181.01	195518.97	NG
P39	145231.79	195551.61	NG
P40	145249.08	195561.72	NG
P41	145243.13	195558.11	NG
P42	145236.49	195554.21	NG
P43	145191.30	195529.67	NG
P44	145244.62	195559.02	NG
P45	145217.55	195546.22	NG
P46	145255.70	195565.70	NG
P47	145222.10	195547.04	NG
P48	145216.00	195619.65	NG
P49	145211.56	195565.01	NG
P50	145283.88	195570.13	NG
P51	145270.06	195563.25	NG
P52	145188.26	195642.33	NG
P53	145171.62	195640.65	NG
P54	145303.96	195681.05	NG
P55	145365.04	195652.05	NG
P56	145311.99	195644.04	NG
P57	145293.21	195731.92	NG
P58	145295.97	195718.84	NG
P59	145299.57	195701.77	NG
P60	145297.86	195682.31	NG
P61	145293.89	195728.69	NG
P62	145220.22	195538.47	NG
P63	145301.90	195690.69	NG
P64	145293.89	195728.69	NG
P65	145297.39	195719.06	NG
P66	145301.07	195702.01	NG
P67	145303.47	195690.91	NG
P68	145305.56	195681.24	NG
P69	145350.89	195686.79	NG
P70	145192.63	195524.75	NG
P71	145235.73	195634.25	NG
P72	145248.66	195636.63	NG
P73	145258.60	195638.45	NG
P74	145298.53	195577.41	NG
P75	145312.93	195584.57	NG
P76	145374.21	195563.92	NG
P77	145270.78	195640.69	NG
P78	145312.94	195638.86	NG
P79	145265.85	195567.86	NG
P80	145267.69	195568.77	NG
P81	145273.16	195631.47	NG
P82	145323.63	195596.51	NG
P83	145310.60	195590.05	NG
P84	145188.94	195551.32	NG
P85	145203.65	195626.23	NG
P86	145237.70	195624.95	NG
P87	145251.76	195574.15	NG
P88	145238.40	195625.08	NG
P89	145251.16	195627.43	NG
P90	145261.16	195629.26	NG
P91	145222.47	195631.81	NG
P92	145364.32	195688.44	NG
P93	145370.78	195586.98	NG
P94	145361.66	195636.56	NG
P95	145348.85	195645.39	NG
P96	145281.38	195575.56	NG
P97	145296.03	195582.83	NG
P98	145269.23	195640.41	NG
P99	145270.99	195640.73	NG
P100	145271.82	195631.22	NG
P101	145272.80	195631.40	NG
P102	145367.63	195575.99	NG
P103	145367.24	195574.64	NG

NG: niet gematerialiseerd

- Legende:**
- Grond over te dragen tot openbaar domein
 - Nieuwe rooilijn



Gemeente Puurs-Sint-Amands

Coolhemveldstraat - L. Nutenstraat
2870 Puurs-Sint-Amands

Afdeling 1 Sectie D Nummer(s) 1006 D, 1006 C, 1006 B, 1007C, 1007/2, 1007 D, 1005 K, 1005 J, 1004 B, 956 C, 955 C2, 955 B2, 957, 958 A, 958 B, 958 C, 960 A, 989, 990, 991 N, 991 M, 991 G, 991 A, 1005 S, 1005 L

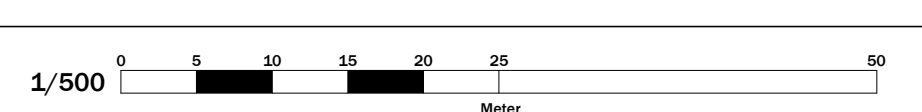
ROOILIJNPLAN

Naar waarheid opgemeten en opgemaakt door de ondergetekende M.s.o.g. / Landmeter-Expert bevestigd door de Rechtbank van Eerste Aanleg te Mechelen - ingeschreven onder nr. LANO40475
Puurs-Sint-Amands, 3 juni 2021
MARC VAN OPSTAL



Versie	Datum	Onderwerp	Getekend	Goedgk.

Gemeten door	MVO	Getekend door	LVD	Dossiernummer
Schaal	1/500	Papierformaat	A1	20196905
Coörd.syst.	Lambert 72	Hoogtesyst.	TAW	Datum



3 juni 2021